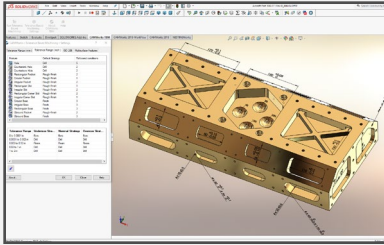


WHAT'S NEW IN CAMWORKS 2018

FIND OUT WHY CAMWORKS[®] WAS CHOSEN TO POWER SOLIDWORKS[®] CAM



1



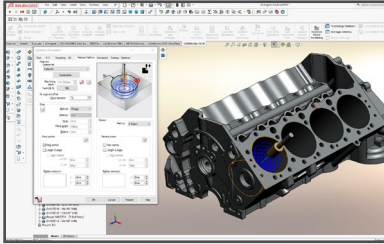
Tolerance Based Machining

- New and improved User Interface
- Automatically reads SOLIDWORKS[®] MBD/DimXpert dimensions and selects the correct machining strategy based on tolerance range
- ISO 286 support for fits and limits

Benefits

Automate CNC programming and eliminate 2D drawings by leveraging MBD and PMI data to perform Smart Manufacturing

2



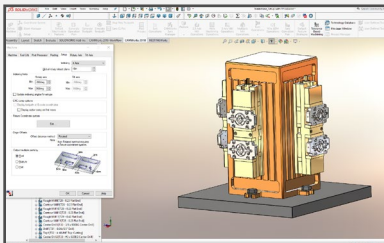
Powerful User Experience Improvements

- All new operation parameter images
- Improved workflow for new operations
- New and improved Toolpath Simulation UI, in SOLIDWORKS[®] property manager
- New option to mirror toolpaths from setup
- Simplified fully associative, rebuild process

Benefits

Streamline the CNC programming of SOLIDWORKS[®] parts and assemblies, reduce delivery time, and reduce errors

3



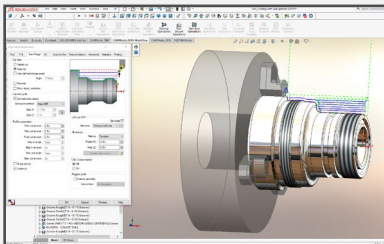
Enhanced New Milling Capabilities

- All new 3 axis toolpath engine with a host of new capabilities and options
- New feature sorting functionality and UI
- Improved UI for Part Perimeter features
- Improved Z-depth feature recognition
- Subroutine support in the machine setup

Benefits

Improve program efficiency, increase production, reduce programming time and improve quality through standardization

4



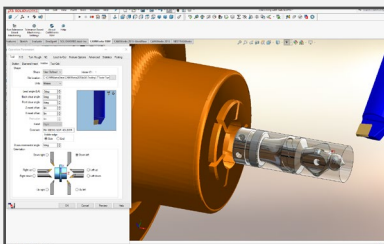
2 & 4 Axis Turning Improvements

- New Main and Sub-spindle Coordinate Systems directly from the Machine setup
- Preview of turning operation parameters
- New Curve feature for turning tools
- Improved insert program point, gouge checking capabilities

Benefits

Increased flexibility, improved toolpath control, reduce parameter changes, leverage canned cycles

5



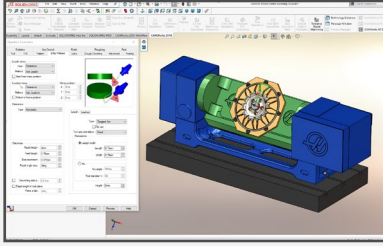
Multi-tasking Mill/Turn Enhancements

- New user defined, custom turn inserts using SOLIDWORKS[®] parts and assemblies
- User defined tool holders and tool assemblies using SOLIDWORKS[®] parts and assemblies

Benefits

Use specialized tooling to increase program efficiency, reduce cycle times, and improve part quality

6



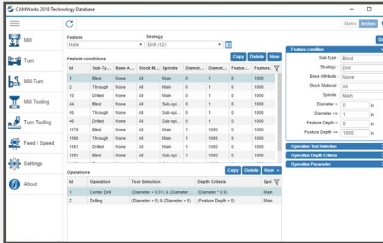
New 4 & 5 Multi-Axis Milling Features

- Ability to define Curve Projection direction
- Additional new Entry/Retract options
- New Contact point options for ball-nose mills
- New Extend and Trim toolpath options

Benefits

Precisely control multi-axis toolpaths to avoid issues and improve productivity

7



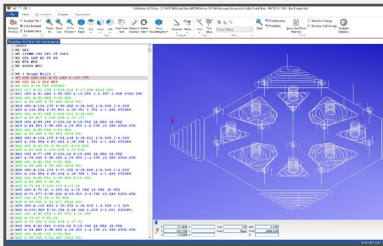
Knowledge Based Machining

- New SQLite database engine
- Improved TechDB™ User Interface
- Improved User Interface and functionality for tapped holes
- Additional Parameters for 3D milling

Benefits

Capture your best practices and automatically reuse them. Automate, standardize!

8



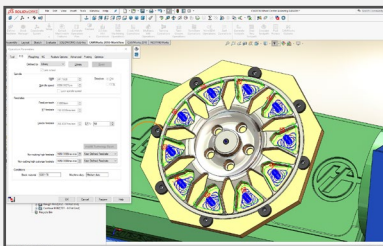
Integrated NC Editor Powered by CIMCO

- Powerful new editing capabilities
- Accurate G-code back-plotting by CIMCO
- Renumber programs, globally and selectively adjust speeds & feeds, and more
- Send and receive from your CNC machine

Benefits

Check and optimize your programs, reduce setup time, and send the program to your CNC machine

9



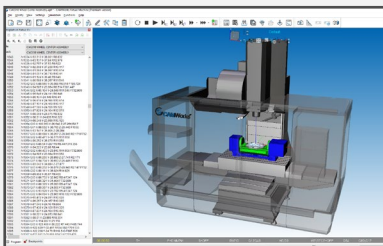
Advanced High Speed Machining

- New maximum feedrate options
- Tapered and filleted pocket support
- Improved rest material machining
- New clearance plane options

Benefits

Reduce cycle time by up 80%, increase tool life by 500%, leverage the full flute length of your tools

10



CAMWorks Virtual Machine Improved

- Fully integrated true G-code simulation
- All new Graphical User Interface
- Improved Program Window design
- New all-in-one Tool Database UI

Benefits

True G-code machine simulation. Verify your programs, avoid collisions, and reduce setup times



Hello, I'm from HCL's Engineering and R&D Services. We enable technology led organizations to go to market with innovative products and solutions. We partner with our customers in building world class products and creating associated solution delivery ecosystems to help bring market leadership. We develop engineering products, solutions and platforms across Aerospace and Defense, Automotive, Consumer Electronics, Software, Online, Industrial Manufacturing, Medical Devices, Networking & Telecom, Office Automation, Semiconductor and Servers & Storage for our customers.

For more details contact: inquiries@camworks.com

Visit our website: <http://www.camworks.com>

GEOMETRIC IS NOW A PART OF HCL TECHNOLOGIES

Contact us

US: +1.480.367.0132

Europe: +49.711.49.039.730

APAC: +91.22.67056880

HCL